

WALSLEY

SATURDAY 3rd SEPTEMBER 1977
Kick off 3.00 p.m.

FOOTBALL LEAGUE
DIVISION THREE

TODAY'S MATCH SPONSORS

SPORTSCO-
*Throughout the
Midlands*

TODAY'S MATCH SPONSORS

SPORTSCO-
Simply the Best

SPORTSCO LUCKY No.
No. 1266



OFFICIAL PROGRAMME
Vol. 12 Issue 4
Price 15 pence

SWINDON TOWN

SPORTSCO

ON YER BIKE TO SPORTSCO,
FELLA! BRMB AND
SPORTSCO HAVE ONETHING IN
COMMON - THEY'RE SIMPLY THE
BEST FOR SPORT IN THE MIDLANDS.
WHATEVER THE NAME OF YOUR
GAME, OURS STAYS THE SAME...
... SPORTSCO! **Tony Butler**



SPORTSCO THROUGHOUT THE MIDLANDS

BIRMINGHAM
UNIT 34 WEST MALL
BIRMINGHAM
SHOPPING CENTRE
TEL 021 643 8798

WOLVERHAMPTON
12A CLEVELAND STREET
WULFRUN CENTRE
TEL 20256

WALSALL
15 DIGBETH
TEL 21875

SUTTON COLDFIELD
114 THE PARADE
GRACECHURCH CENTRE
TEL 021 354 1387

STAFFORD
48 GREENGATE STREET
TEL 51741

DUDLEY
202 HIGH STREET
TEL 211912

WALSALL FOOTBALL CLUB LTD

Fellows Park
Walsall

Club Offices
Tel: 22791

Chairman:
K. E. Wheldon

Directors:
J. A. Harris
R. Homden
S. E. Boler
B. E. Bradnack

Secretary:
H. J. Westmancoat



Manager:
Dave Mackay

Assistant Manager:
Des Anderson

Coaches:
Roger Hynd
Neil Martin

Chief Scout:
Ron Jukes

Physiotherapist:
R. G. Davies

Ticket Enquiries:
South Staffs Pools
and
Commercial Dept.
Tel. 30696

Programme
Compiled and Designed by:
Midland Promotions
Walsall

Editor:
T. W. J. Edmonds

Article Contributors:
Trevor Gedge (Express & Star)
Paul Marston (Evening Mail)
Dave Whinyates
(Walsall Observer)

MACKAY REPORT



In the last programme I made it quite clear that I was far from happy with the performance of the side in the Exeter match and expressed hopes that following the point we picked up at Lincoln we would add further to this when visiting Sheffield. We did manage to get one point and were made to fight hard to get that. Wednesday make life difficult for any side visiting Hillsborough and our defence had to be on it's toes to keep the scoresheet clean.

Following this match, things looked brighter for our League Cup match with Preston, but yet again the team failed to show

it's true ability in front of the home supporters. We have not lost a match away from home since I came here. This is a record of which we can all be proud, but when we play at home the whole team appears to feel the increased pressures. Instead of settling into a confident and controlled method of football, they seem to freeze. This I thought was highlighted during the Preston game with even the simple things being done badly. Our passing especially left a lot to be desired with too many balls being given away to the opposition. This is probably the biggest sin in the game, and one of which the team has never before been really guilty. As a professional footballer this should be elementary and it is one thing that must be improved.

Whilst realising that there are many things to be sorted out, it is possible to be too critical. For instance, with the exception of one shot that skimmed the bar late in the first half, I would find it very difficult to tell you of one other clear cut chance that Preston had. We could and should have scored twice ourselves with two fine chances just before half time. However that is now all in the past and we have to travel to Preston next Tuesday. We are still in the League Cup and bearing in mind our away performances it would be unwise to discount our chances of making the next round. Everything is far from lost. That of course is a few days away and more important at this time is today's match with Swindon Town. I spent some time as manager there and greatly respect the existing side who will surely be going for promotion as the season progresses. Following their easy win over Cardiff earlier in the week they will be very confident. This will not be an easy game and taking both points will be difficult. That however has to be our aim. I'm sure that once we start putting our game together we will be challenging for a leading league position ourselves. We cannot afford to wait too long and must play our way back to form and start winning matches, especially those at home, right now.

Gene Mackay



TOP OF THE LEAGUE

FOR SCRAP METAL PRICES — SEVEN DAYS SERVICE

WALSALL METAL Co.

THE DITCH, OFF ABLEWELL STREET, WALSALL. TELEPHONE: 28293

WE WILL QUOTE YOU FOR ALL
— NON FERROUS METALS —
COPPER — BRASS — GUNMETAL — LEAD
PHOSPHOR BRONZE — ALUMINIUM
TIN — BATTERIES — MERCURY — NICKLE ETC

MONDAY TO FRIDAY 8.30 am TO 6.00 pm
SATURDAY 8.30 am TO 4.00 pm
SUNDAY 10.00 am TO 12.30 pm

FOLLOW THE SADDLERS

IN THE



Walsall Observer

YOUR LOCAL WEEKLY NEWSPAPER

SPORTSCO



**Official Suppliers to
Walsall Football Club are
delighted to sponsor today's match**



We at Sportsco are very pleased to sponsor today's match versus Swindon Town, and would like to take the opportunity to wish Walsall Football Club every success, not only in today's fixture, but throughout the present season.

It would be a very pleasant thought if this season's efforts were to culminate in promotion, and we at Sportsco can only offer the club every support in supplying the best playing and training kit available. I am sure that under the guidance of Dave Mackay, and the continuing support of Club Chairman Mr. Ken Wheldon, who has already worked wonders for the club, they are well on the way to success.

To you the supporters I trust that you will enjoy today's game to the full. Best of luck in the Sportsco lucky programme draw, and don't forget the voucher on this page. It really can save you pounds.

Bob Runham
Advertising and Promotions Manager
Sportsco



PRESENT

**THIS PROGRAMME
AT ANY SPORTSCO SHOP
AND SAVE YOURSELF
10% ON ANY
PURCHASE YOU MAY
WISH TO MAKE**

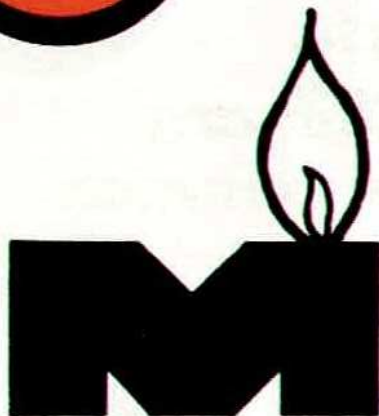


★ COMBUSTION
MAINTENANCE
ENGINEERS

★ ELECTRICAL
CONTRACTORS

★ ELECTRICAL
RETAILERS

*You are always
Welcome
at our
Showrooms*



MASON STYLE ELECTRICS

4 HAWES CLOSE, WALSALL WS1 3HG

Telephone: 611825 and 611851



**Manufacturers of
GREY IRON and
MALLEABLE
IRON CASTINGS**

Telephone:
BLOXWICH
76898/9
or 76102

**LEAMORE
LANE
LEAMORE
WALSALL
WS2 7BY
STAFFS.**



*We can produce for
you high volume
requirements or one
off specials.*

•
LET US GIVE
YOU A
QUOTATION
FOR ALL
YOUR IRON
CASTINGS
FROM A FEW
OUNCES TO
200 lbs.



*Engineers – Toolmakers and
All Tool Users should remem-
ber these six good reasons why
you should deal with:—*

FOREMOST FOR QUALITY
ORDERS PROMPTLY EXECUTED
XCELLENT DELIVERIES
ALWAYS AT YOUR SERVICE
LARGE STOCKS
LOWEST POSSIBLE PRICES

**ARTHUR FOXALL (TOOLS)
GLYNWED DISTRIBUTION LTD.,
BLUE LANE WEST, WALSALL
Telephone: Walsall 27584**

THIRD DIMENSION



Although the new League season is only a fortnight old it has already provided some shocks and surprises. Some clubs have made excellent starts, others are already struggling.

Walsall are among those who have not made the beginning their supporters had hoped for, although, under the circumstances, with manager Dave Mackay plagued by injuries among his front running players, points from difficult away games at Lincoln and Sheffield Wednesday is perhaps not too bad.

This afternoon's visitors, Swindon with five points from their first three games, have made just the start everyone dreams about, but Dave Mackay will be anxious that the club which started him out on his managerial career do not make any progress at Walsall's expense.

What about the contrasting fortunes of the promoted clubs. Who would have thought Fourth Division champions Cambridge United would be at the bottom of the table while Colchester, who came up with them in third place, proudly top the division with maximum points from three games.

Cambridge seemed to have given an indication that they were ready to cope with the requirements of Division Three when holding Brighton's strong attacking side to goalless games in the two legs of their first round League Cup-tie.

But they were comprehensively beaten by newly-promoted Bradford City — with former Walsall favourite Bernie Wright getting among the goals — before going down 3-1 to Brighton in the replay. Those two defeats obviously had an effect on last Saturday's league game when Cambridge were defeated 3-2 at home by another club with a Walsall connection — Gerry Summers' Gillingham.

Colchester, by contrast, launched into their Third Division programme by a 5-2 aggregate win over Aldershot in the League Cup opening round, chalked up their third success in the league a week ago when beating Chester 2-0 at Layer Road. Incidentally, Walsall reject Bobby Gough scored both goals in that victory.

All Walsall supporters know how Exeter, the other promoted club, fared in their opening Third Division fixture, but they could only manage a 2-2 home draw with Bury last week and face another stiff test

against undefeated Shrewsbury at the Gay Meadow today.

But none of the relegated clubs has been able to hit the sort of early season form which would earmark them for a quick return to Division Two.

All three were hustled out of the League Cup after replays by Fourth Division clubs and poor John Sillett's Hereford were propping up the division with Cambridge, still pointless after two games.

Carlisle, relegated along with Hereford and Plymouth, picked up their first point from a dour goalless home draw with Plymouth, while the Devon club had opened their Third Division programme with another scoreless home match against Preston.

It would seem clear at this early stage all three relegated sides have a distinct lack of fire power.

While the early season form can only be a pointer to what might happen, there are already indications certain clubs are going to make a big impact while others struggle.

*By Trevor Gedge
of the Express and Star*

DIVISION III

	P.	W.	D.	L.	F.	A.	Pts.
Colchester	3	3	0	0	8	1	6
Swindon	3	2	1	0	6	2	5
Chesterfield	2	2	0	0	5	1	4
Shrewsbury	2	2	0	0	5	2	4
Tranmere	2	2	0	0	4	2	4
Exeter	2	1	1	0	5	3	3
Bury	2	1	1	0	3	2	3
Preston	2	1	1	0	3	2	3
Oxford U.	3	1	1	1	7	7	3
Chester	2	1	0	1	4	3	2
Bradford	3	1	0	2	6	6	2
Rotherham	2	1	0	1	5	5	2
Sheff. Wed.	2	0	2	0	1	1	2
Plymouth	2	0	2	0	0	0	2
Gillingham	2	1	0	1	4	5	2
Wrexham	3	0	2	1	4	5	2
Walsall	3	0	2	1	3	5	2
Carlisle	2	0	1	1	2	3	1
Port Vale	2	0	1	1	2	4	1
Portsmouth	2	0	1	1	1	3	1
Lincoln	3	0	1	2	3	6	1
Peterboro	3	0	1	2	0	4	1
Hereford	2	0	0	2	1	5	0
Cambr'ge U.	2	0	0	2	2	7	0

WELCOME TO OUR WISLITORS SWINDON TOWN

JIMMY ALLAN—First choice goalkeeper. Formerly with a Scottish junior side, signed as an apprentice with Swindon in 1970, made debut in 1971.

JOHN McLAUGHLIN—Right-back, former Youth international and regular in the side since his arrival from Colchester in December, 1973 in £25,000 player-exchange deal. Can also play midfield.

JOHN TROLLOPE—Only surviving member of Swindon team which beat Arsenal to win 1969 League Cup Final. Now in 17th season and made club record 700th league appearance last Saturday. Only 64 games away from all-time appearance record.

KENNY STROUD—Midfield. Former England youth international. Signed professional 1970 after three-year apprenticeship. Always got an eye for a goal.

STEVE AIZLEWOOD—Central defender, came from Newport for £12,000 in March, 1976. Welsh under 23 international.

COLIN PROPHETT—Skipper. Former Sheffield Wednesday and Norwich defender bought from Norwich for £25,000 in 1974-75 season after a month on loan.

DAVID MOSS—Winger signed from non-league in 1969 and a first team regular since 1970. Top scorer last season with 21 goals and Supporters Club "player of the season".

CHRIS KAMARA—Only 19, signed from Portsmouth for £17,500 a month ago. Scored on his league debut at Sheffield Wednesday and last Saturday against his old club.

CHRIS GUTHRIE—Cost Sheffield United £100,000 when sold by Southend. Joined Swindon two months ago for £27,500. Scored on his debut in League Cup-tie at Swansea, sent off on his home debut.

RAY McHALE—Former Chesterfield mid-field man, bought by manager Danny Williams for a bargain £8,000 from Halifax 12 months ago. Made a big impact coming forward and scoring goals last season.

TREVOR ANDERSON—Ex-Manchester United Northern Ireland international, who cost £25,000 when signed in November, 1974. Supporters Club "player of the year" 1975-76 and joint top scorer that season with 19 league and cup goals. Second highest top scorer last campaign with 15 goals.

DAVE CUNNINGHAM—Scottish-born winger, joined Swindon on a free transfer from Southend during the close season.

ANDY FORD—Utility player, also signed from Southend for £8,000 during close season.

Swindon Town have made their best start to a new campaign since they gained promotion to the Second Division in 1968-69 and won the League Cup in the same year by beating Arsenal 3-1 at Wembley.

Certainly there is an air of great expectancy down in Wiltshire with Swindon up among the early Third Division pacemakers, having taken five points from their first three games and making sure of a place in the third round of the League Cup thrashing Cardiff 5-1.

Manager Danny Williams has splashed out in the transfer market to strengthen his playing staff for a determined promotion push, spending more than double the £25,000 Swindon received for the sale of striker Dave Syrett to Mansfield.

His most expensive purchase was £27,500 paid to Sheffield United for striker Chris Guthrie, who had cost £100,000 when Southend sold him two years ago.

Guthrie, like the other new men, has made an immediate impact, although in his case it was perhaps not quite in the manner he had intended. He scored on his debut in the League Cup at Swansea, was sent off on his home debut and scored again on his Third Division debut for the club.

Chris Kamara, who is only 19 and an outstanding prospect, was another shrewd buy by manager Williams from Portsmouth. He scored on his league debut and also got the first goal in Swindon's 3-1 home win over his old club last Saturday.

Other newcomers like Andy Ford and Dave Cunningham, who both came from Southend, have also slotted in well with manager Williams' overall plans.

Swindon play with two conventional wingers usually David Moss and Trevor Anderson, and have big Guthrie as the target man in the middle. They have also tightened up their defence considerably this season.

Although all the signs point to a Swindon revival this season, Walsall boss Dave Mackay — who started his managerial career at Swindon — must be hoping that he can plot the downfall of his old club this afternoon.

*By Trevor Gedge
of the Express and Star*



**BACK ROW (Left to Right) — M. French; K. Stroud; R. Brinkworth; R. Lewis; A Gilligan; P. Collicutt.
MIDDLE ROW (Left to Right) — J. Allan; J. Trollope; C. Prophett; C. Kamara; C. Guthrie; S. Aizlewood; A. Ford; K. Roberts.
FRONT ROW (Left to Right) — D. Moss; D. Cunningham; J. McLaughlin; T. Anderson; R. McHale; H. Goddard.**

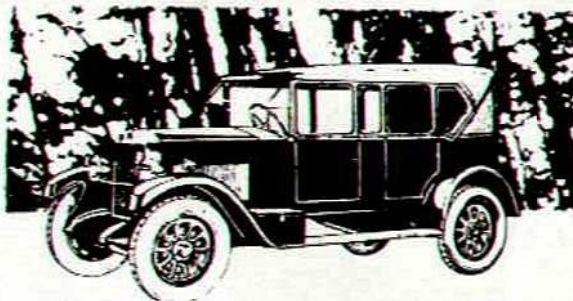


Associated
Insurance
Brokers

J. E. ROWLAND & Co.
5 BRIDGE STREET, WALSALL WS1 1DT
Telephone: Walsall 25454/5

**CAR
INSURANCE**

*For entirely reliable Insurance advice
contact Rowlands of Walsall for you and
your car's sake.*



J HODSON & SONS

**IRON AND STEEL MERCHANTS
SKIP CONTAINER HIRE
SCRAP AND FACTORY CLEARANCE**

**BLOXWICH ROAD,
WALSALL**

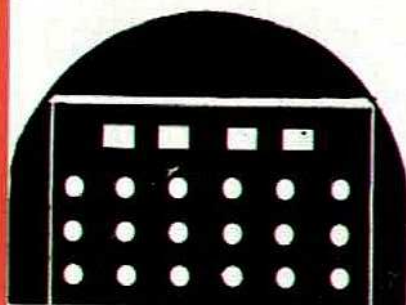
Tel 79490 & 614103

**BUYERS OF RE-USABLE
PLANT AND MACHINERY**

J. Hodson (Plants & Machinery Sales) Ltd.

Bloxwich Road, Walsall

Tel: 79490 & 614103



**2 NEW STREET,
QUARRY BANK
Cradley Heath 68191**

**Experienced in
Heavy Installation Work**

and FLOODLIGHTING

**ELECTRICAL ENGINEERS
AND CONTRACTORS**

WEAVER AND BRETTELE

THE GOOD OLD DAYS



In the last programme we had reached the end of the 1938/39 season. Rather than jump the years to after the war it might be better to dwell upon the start of the following season which kicked off with a number of Football League Jubilee matches organised upon a regional basis.

Walsall's opponents were Mansfield and they romped home winners by a margin of 5.1 with three goals coming from Gilbert Alsop and one each from Dai Richards a new Welsh International signing from Birmingham City and Charlie Bulger. The League season then commenced with Walsall visiting South-end and suffering a 3.2 defeat. This was followed by a goalless draw with Torquay and then a 1.0 home win over Q.P.R. with Charlie Bulger again scoring within the first few minutes of the game. Sadly we were never to know how good this very promising Walsall side would have been for was was then declared.

For a time this ended football completely, but then in an effort to keep up the morale of the nation, Regional Leagues were introduced on the under-

standing that 'guest' players could be used on a match to match basis. Although players such as Johnny Hancocks had already joined the forces Walsall virtually had a full side available for their first match at Leicester. However they crashed 6.1 and it was not until the return match a few weeks later that they notched their first victory by a margin of 4.3. The emphasis at this time of course was upon entertainment and therefore high scoring spectaculars were commonplace. Walsall unfortunately constantly found themselves upon the receiving end with defeats at The Hawthorns by seven goals to two and then at Northampton six goals to one. Home matches were no happier with defeats by Wolves 5.3 and Luton 6.4.

After heavy snow had halted games for many weeks Walsall got into the scoring act with a 5.1. victory at The Molineux and a 3.2 victory in a second match with the Albion at The Hawthorns.

Gilbert Alsop and Wally Brown gave splendid displays up front whilst in defence Walsall's former goalkeeper Fred Biddleston who had been transferred to Aston Villa some years earlier returned to deputise whenever the young Bert Williams was not available.

Gates then were around 4,000 and in view of the men called up or on wartime work during Saturday afternoons this was very encouraging. Those who recall the games will remember most of all the excitement generated by the off the cuff attacking soccer and the high degree of sportsmanship.

COLIN

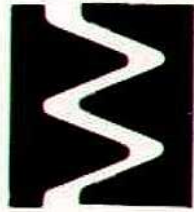
FARREN HOLDINGS LTD



**FARREN, CASSELLS
& WESTLEY LTD.**

Tel. WALSALL 27826

**Willenhall
Pressure
Diecasting
Co. Ltd.**



**PRESSURE DIECASTING IN ZINC
BASED ALLOYS BS 1004A**

Registered Office:—

**MUSK LANE TRADING ESTATE
WEST MIDLANDS DY3 2UH.**



*Manufacturers
of*

**SILVER PLATED
GIFTWARE**

Tel. DUDLEY 213192

**ZOAR DIE TOOLS
(DUDLEY) LTD.**

Tel. DUDLEY 56476



*Manufacturers of
Pressure and Plastic Moulds*

A Stainless Reputation

T1 CHESTERFIELD
A member of the world-wide
STEEL TUBE DIVISION



**T1 Chesterfield Ltd., Stainless Steel Division,
Green Lane, Walsall. Tel. Walsall 21222**



John Henry Mechanicals Limited

52 Fair Oaks Drive,
Great Wyrley, Walsall,
West Midlands WS6 6HB.
Telephone: Walsall 28421

Heating/Ventilating

Air Conditioning

FACTS & FIGURES

KEY: - (dnp) Did not play, (d) Substituted, (pl) Penalty

Date	Opponents	V	F	A	Gate	Points	Position	1	2	3	4	5	6	7	8	9	10	11	12
Sat. Aug. 13th	Bristol Rovers (L.C. 1)	A	2-1		3467	-	-	Kearns	Taylor	Caswell	Hynd	Serella	Newton	Dennehy	Bates	EVANS	Buckley	Birch	Clarke (dnp)
Tues. Aug. 16th	BRISTOL ROVERS (L.C. 1)	H	1-0		5445	-	-	Kearns	Taylor	Caswell	Hynd	Serella	Newton	Dennehy(d)	Bates	Evans	Buckley	Birch	Clarke
Sat. Aug. 20th	EXETER CITY	H	1-3		5174	-	-	Kearns	TAYLOR	Caswell	Hynd	Serella	Newton	Shelton(s)	Bates	Evans	Buckley	Birch	Clarke
Wed. Aug. 24th	Lincoln City	A	2-2		3723	1	-	Kearns	Taylor	Caswell	Hynd	Serella	Newton	Shelton	Bates	EVANS	BUCKLEY(p)	Birch	Wood(dnp)
Sat. Aug. 27th	Sheffield Wednesday	A	0-0		10834	2	17	Kearns	Taylor	Caswell	Hynd	Serella	Newton	Dennehy	Bates	Wood	Buckley	Birch	Evans(dnp)
Tues. Aug. 30th	PRESTON N.E. (L.C. 2)	H	0-0		5445	-	-	Kearns	Taylor	Caswell	Hynd	Serella	Newton	Dennehy	Bates	Wood	Buckley	Birch	Shelton
Sat. Sept. 3rd	SWINDON TOWN	H																	
Tues. Sept. 6th	PRESTON N.E. (L.C. 2 Replay)	A																	
Sat. Sept. 10th	BURY	H																	
Tues. Sept. 13th	Plymouth Argyle	A																	
Sat. Sept. 17th	Shrewsbury Town	A																	
Sat. Sept. 24th	PORT VALE	A																	
Tues. Sept. 27th	PRESTON NORTH END	H																	
Sat. Oct. 1st	Peterborough United	A																	
Tues. Oct. 4th	Rotherham United	A																	
Sat. Oct. 8th	PORTSMOUTH	A																	
Sat. Oct. 15th	Chesterfield	A																	
Sat. Oct. 22nd	WREXHAM	H																	
Tues. Oct. 25th	League Cup 3																		
Fri. Oct. 28th	Tranmere Rovers	A																	
Sat. Nov. 5th	COLCHESTER UNITED	H																	
Sat. Nov. 12th	Hereford United	A																	
Sat. Nov. 19th	OXFORD UNITED	H																	
Sat. Nov. 26th	F.A. Cup 1																		
Tues. Nov. 29th	League Cup 4																		
Sat. Dec. 3rd	Gillingham	A																	
Sat. Dec. 10th	BRADFORD CITY	H																	
Sat. Dec. 17th	F.A. Cup 2																		
Mon. Dec. 26th	Carlisle United	A																	
Tues. Dec. 27th	CHESTER	H																	
Sat. Dec. 31st	CAMBRIDGE UNITED	H																	
1978																			
Mon. Jan. 2nd	Colchester United	A																	
Sat. Jan. 7th	LINCOLN CITY (3)	A																	
Sat. Jan. 14th	Exeter City	A																	
Tues. Jan. 17th	League Cup 5																		
Sat. Jan. 21st	ROTHERHAM UNITED	H																	
Sat. Jan. 28th	Swindon Town (4)	A																	
Sat. Feb. 4th	Bury	A																	
Sat. Feb. 8th	League Cup SF																		
Sat. Feb. 11th	SHREWSBURY TOWN	H																	
Wed. Feb. 15th	League Cup SF																		
Sat. Feb. 18th	Port Vale (5)	A																	
Sat. Feb. 25th	PETERBOROUGH UNITED	H																	
Sat. Mar. 4th	Portsmouth	A																	
Tues. Mar. 7th	PLYMOUTH ARGYLE	H																	
Sat. Mar. 11th	CHESTERFIELD (6)	A																	
Sat. Mar. 18th	Wrexham (LCF)	H																	
Sat. Mar. 25th	CARLISLE UNITED	H																	
Mon. Mar. 27th	Chester	A																	
Tues. Mar. 28th	TRANMERE ROVERS	H																	
Sat. Apr. 1st	Cambridge United	A																	
Tues. Apr. 4th	Preston North End	A																	
Sat. Apr. 8th	HEREFORD UNITED (SF)	H																	
Sat. Apr. 15th	Oxford United	H																	
Sat. Apr. 22nd	GILLINGHAM	H																	
Tues. Apr. 25th	SHEFFIELD WEDNESDAY	H																	
Sat. Apr. 29th	Bradford City	H																	
Sat. May 8th	F.A. Cup Final	A																	

Supporters Club Apologies

We the Supporters Club of Walsall Football Club wish it to be known that recent letters sent to the local press by our Treasurer Mr. S. Canning on the subject of Car Park charges and the Boutique were purely personal comments.

At no time were these matters ever discussed by the Committee before publication of the articles and therefore we have no alternative but to disassociate ourselves from the contents of the letters.

H. W. DAVIES (CHAIRMAN)

J. H. WILSON (SECRETARY)

WALSALL F.C. SUPPORTERS CLUB



INSITU ENGINEERING

6 MOUSE HILL, PELSALL,
WALSALL, WEST MIDLANDS.

telephone: Pelsall 682476



SITE FABRICATION and INSTALLATION
WELDING and DESIGN
CIVIL ENGINEERING and BUILDING WORK



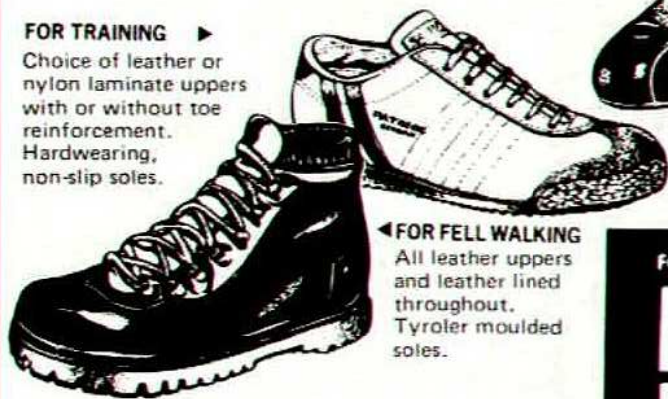
FOR TENNIS, BADMINGTON,
SQUASH

Soles specially designed
to withstand rigours of
the game. With
leather or leather
reinforced
uppers.



FOR TRAINING ▶

Choice of leather or
nylon laminate uppers
with or without toe
reinforcement.
Hardwearing,
non-slip soles.



FOR FELL WALKING
All leather uppers
and leather lined
throughout.
Tyroler moulded
soles.

FOR SOCCER & RUGBY

In a wide variety of styles
to suit individual
preference. Superbly
comfortable with uppers
in leather.

FOR NAME OF YOUR NEAREST STOCKIST, PLEASE CONTACT

PATRICK U.K. LIMITED

Grove Terrace, Walsall WS1 2NE
Tel. Walsall 21322

from your local sports shop

TUBE MANIPULATIONS — FABRICATIONS
SPECIALISED HEAT TREATMENT

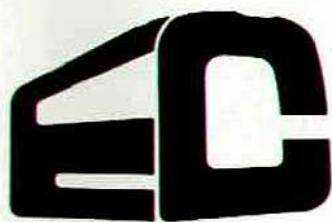
R. W. McClaughlin Tubefabs Limited

ATLAS WORKS

HATHERTON STREET

WALSALL

Telephone: Walsall 25133/4



TOURS —
U.K. & Europe



★ ★
FOOTBALL EXCURSIONS

★ ★
EVERTON COACHES LTD

Tel. 090 57 2525 CHAPEL BRIDGE DROITWICH · WORCS.

HALFTIME SCOREBOARD

A. BURY SHEFFIELD WED.	L. BIRMINGHAM LIVERPOOL
B. GILLINGHAM BRADFORD CITY	M. BRISTOL CITY ASTON VILLA
C. OXFORD UTD. PRESTON N.E.	N. COVENTRY CITY LEEDS UTD.
D. PETERBOROUGH WREXHAM	P. DERBY MANCHESTER UTD.
E. PLYMOUTH HEREFORD	Q. EVERTON WOLVES
F. PORTSMOUTH CHESTERFIELD	R. MANCHESTER CITY NORWICH
G. PORT VALE LINCOLN	S. WEST BROM MIDDLESBROUGH
H. ROTHERHAM CARLISLE	T. BURNLEY CRYSTAL PALACE
J. SHREWSBURY EXETER	U. HULL CITY BOLTON
K. ARSENAL NOTTM. FOREST	V. MILLWALL STOKE CITY



**BUTLER FOUNDRIES
GROUP** *Expanding Companies with Vacancies
for the right personnel.*

- ALUMINIUM ALLOY CASTINGS
- GREY IRON CASTINGS
- POWER PRESS AUTOMATION
- MACHINING, TOOLMAKING, PATTERN & DIE MAKING

Coppice Side Industrial Estate · Brownhills · Walsall WS8 7HD · England
Telephone: Brownhills (05433) 2455 · Telex 339933

TODAYS TEAMS

WALSALL

Red shirts with white collar, White shorts with red and green stripe, Green stockings with red top and white band.

SWINDON TOWN

All Blue

MICK KEARNS
BRIAN TAYLOR
BRIAN CASWELL
ROGER HYND
DAVE SERELLA
HENRY NEWTON
MIAH DENNEHY
MICK BATES
ALF WOOD
ALAN BUCKLEY
ALAN BIRCH

123456789101112

JIM ALLAN
JOHN McLAUGHLIN
JOHN TROLLOPE
KENNY STROUD
STEVE AIZLEWOOD
COLIN PROPHETT
DAVID MOSS
CHRIS KAMARA
CHRIS GUTHRIE
RAY McHALE
TREVOR ANDERSON

NEXT MATCHES

Away Tuesday 6th September
Kick off 7.30 p.m.
PRESTON NORTH END

Home Saturday 10th September
Kick off 3.00 p.m.
BURY

REFEREE: Michael G. Peck (Bessacarr, Doncaster)
Married with two children. A schoolmaster who enjoys playing cricket and badminton. Started refereeing 1965.

Linesmen: M. J. R. Barker (Red flag)
G.T. Cartman (Yellow flag)

WALSALL PRESSINGS

COMPANY LIMITED

For

Pressings and Fabrications



WEDNESBURY ROAD
WALSALL WS1 4JW
Telephone: Walsall 25252/4